

Gallery Artists

Anne Chesnut

PRINTS



Les Yeux du Monde Art Gallery
Charlottesville VA



Les Yeux du Monde
Art Gallery

The Terraces, 115 South First Street
Charlottesville VA 22902

434.973.5566 *tel*

LesYeuxduMonde.com *web*

Our Mission

Les Yeux du Monde specializes in exhibiting and selling contemporary art by regional, national and international artists with an eye to the historical importance of each artist shown. We seek to inspire individuals to explore new artistic perspectives, deepen their understanding of and appreciation for art and to support art in the state and the Mid Atlantic region.

The gallery

Les Yeux du Monde gallery is a leader in the region for contemporary art, sculpture and photography. Founded in 1995, Les Yeux du Monde represents over 40 contemporary artists including Dean Dass, John Borden Evans, Annie Harris Massie, Lincoln Perry, and Russ Warren, as well as some promising undiscovered talents.

Lyn Bolen Warren, the owner/director, received her Ph.D. in art history from the University of Virginia in 1994. She opened the original gallery from her home, and as it developed the gallery moved to its present location on the corner of Water and First Streets off the historic downtown mall. International in scope, Les Yeux du Monde has exhibited work by modern masters such as Jean-Michel Basquiat, Romare Bearden, Frank Stella and Andy Warhol. Les Yeux du Monde also collaborates with the University of Virginia Art Museum and Second Street Gallery on exhibits of caliber, such as the 2000 site specific exhibition *Hindsight/Fore-site: Art for the New Millennium* with the museum in 2000 and more recently, in 2006, the *Anne Slaughter Retrospective* at Second Street Gallery.

Les Yeux du Monde maintains an important inventory of work by regional and national artists. Over the past twelve years the gallery has helped many private and corporate clients assemble collections of high quality art suited to their particular needs and budgets. Les Yeux du Monde has a new exhibition each month which opens to the public, on each “First Friday” from 5:30–7:30.

Anne Chesnut

After graduating from Dickinson College with honors in fine arts and art history, Anne Chesnut received her MFA from Yale University School of Art. She did post graduate work at Robert Blackburn's Printmaking Workshop, the National Academy of Design School and the Studio School, all in New York City. She has shown extensively throughout the United States and her work is in corporate, private, and public collections from Capitol One to the Smithsonian's Copper Hewitt Museum. She has taught at a number of institutions including Yale, Cooper Union, and the University of Maryland's European Campuses while living in Italy. Back in her native Virginia, she now resides in Charlottesville with her son, Giles, and also works as a graphic designer for many prestigious clients which have included the University of Virginia Art Museum, PBS, Oracle, and JP Morgan.

Anne Chesnut's unique digital prints combine layers of meaning and imagery; original drawings, lithographs, and photographs are combined with symbols and graphic elements to create visually compelling and complex works of art that push the edges of what is possible with new media and redefine old media. Her current print series are groupings of individual prints that vary from four to sixty-three. These images are often placed side by side or are sometimes hand-sewn or riveted together. Each individual print within these series is a digitally manipulated composite of her drawings, prints, and photos that makes something entirely new from the images, patterns, colors, and textures.

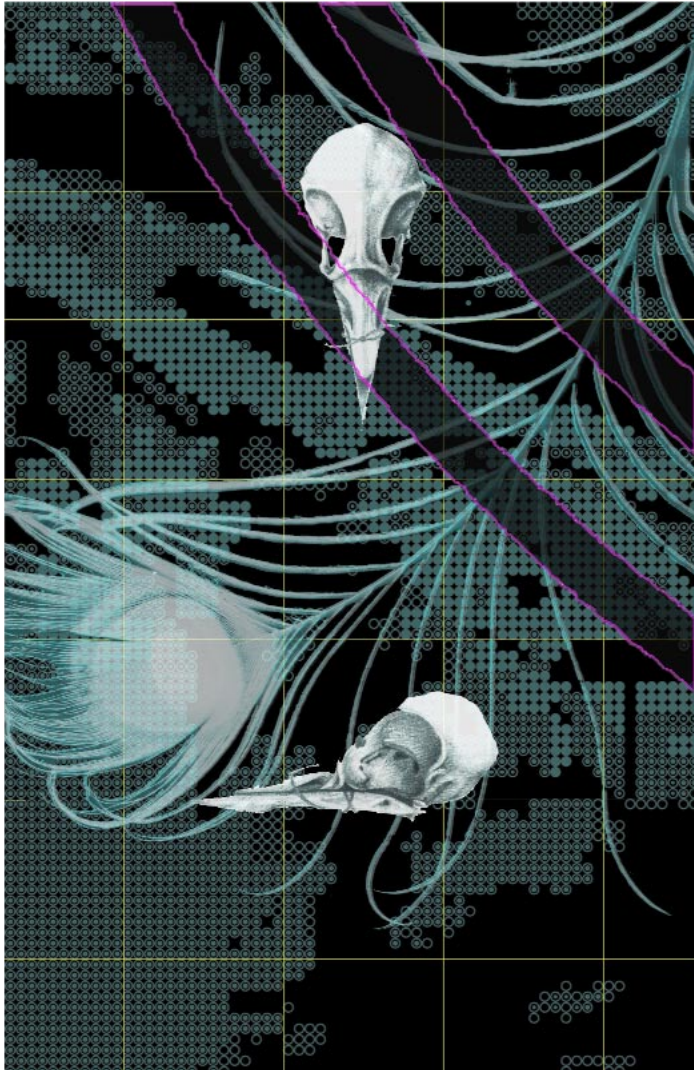


Anne Chesnut
Tree of Life | Solo, 2005
4 piece digital print series
Sheet size, 18 x 13 inches;
image size 10 x 8 inches
Edition of 25
Image © the artist. Courtesy of the
artist and Les Yeux du Monde Gallery



- In her two labyrinth series, Anne Chesnut explores not just the Greek myth and individual mazes but areas of knowledge whose notation may seem maze-like to the uninitiated. In 12 piece series *Labyrinth Study: La Sinistra* print 1.4: Row 1, number 4 examines the ideal of man from old to new: Leonardo's ideal proportions in the foreground are juxtaposed with a field of human DNA strands and engineered wheat. And, in the other labyrinth series, *Labyrinth Study: La Destra*, print 1.4: Row 1, number 4 contrasts references to the minotaur, a creature part man and part bull, with contemporary images of life in gestation, the sonagram.

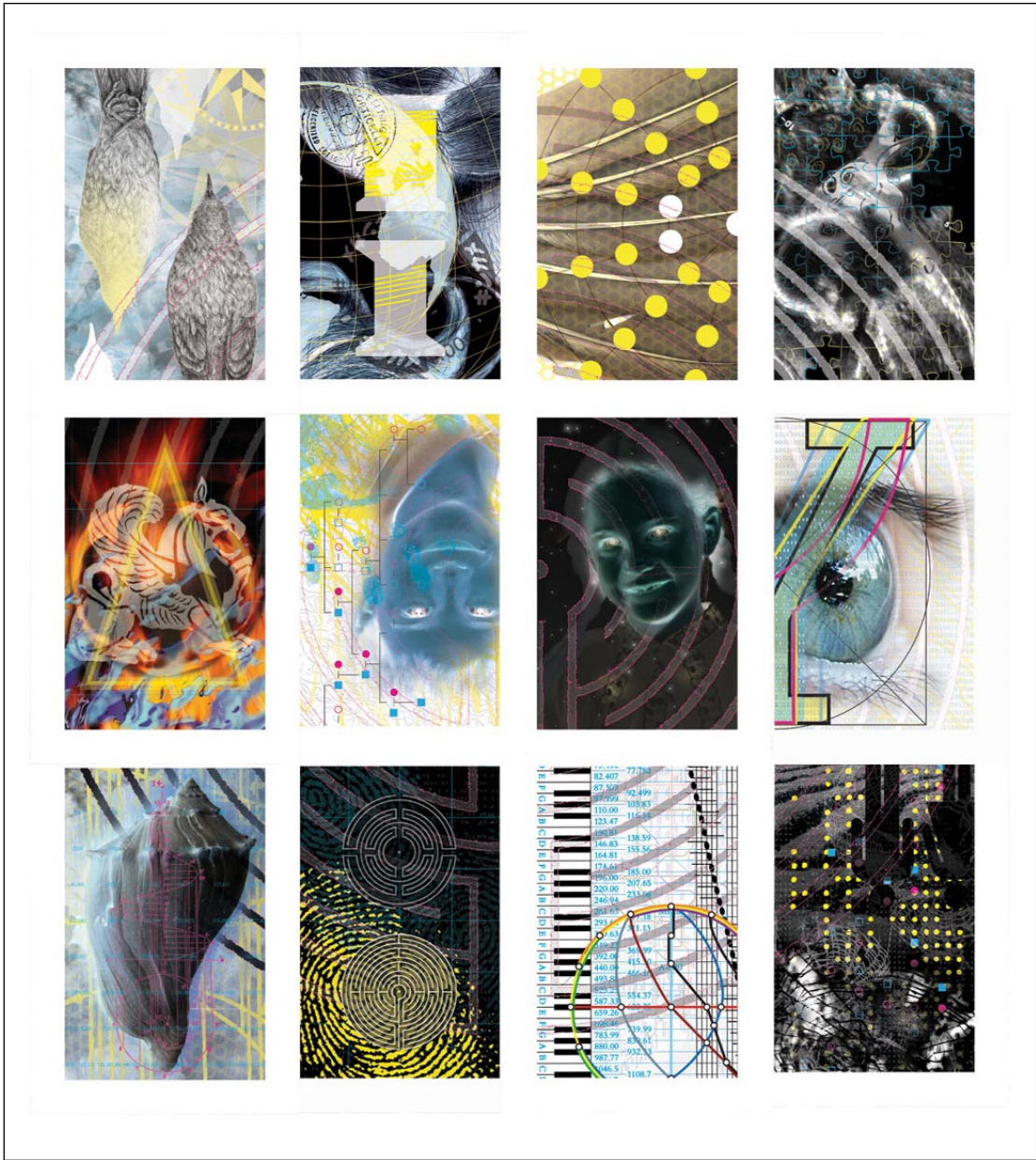
Anne Chesnut
Labyrinth Study: La Sinistra, 1999–2001
 12 piece digital print series. Sheet size, 16 x 11 inches; image size, 10.75 x 7 inches. Edition of 24
 Image © the artist. Courtesy of the artist and Les Yeux du Monde Gallery



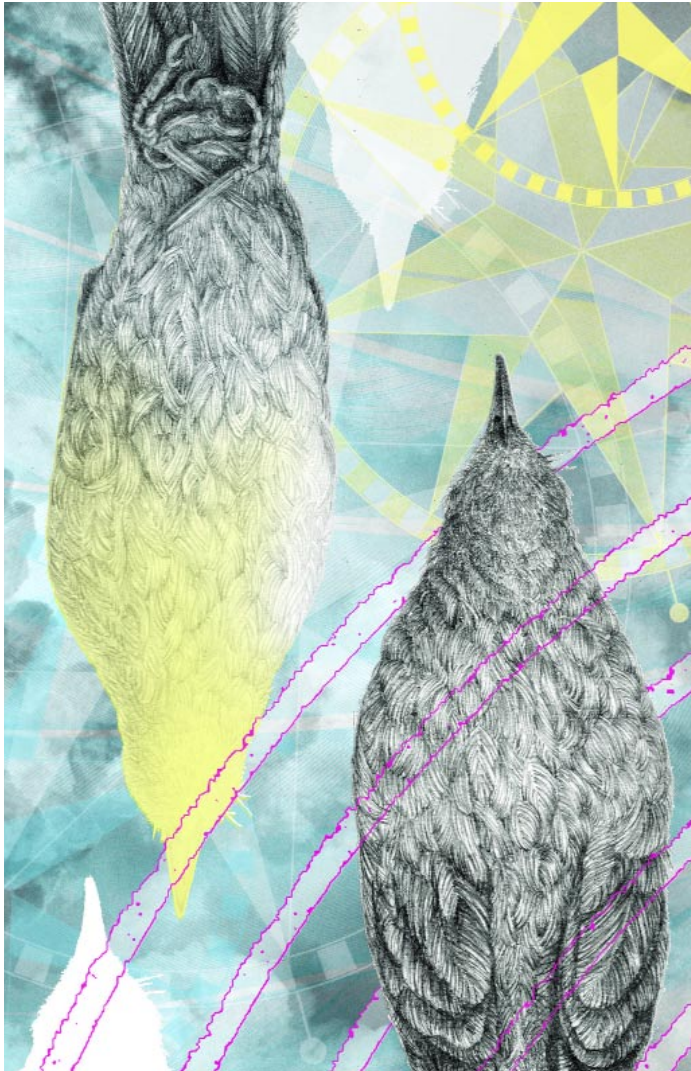
Anne Chesnut
 3.1 Row 3, number 1 from the
 composite 12 piece series
Labyrinth Study: La Sinistra, 1999–2001
 Image © the artist. Courtesy of the artist
 and Les Yeux du Monde Gallery



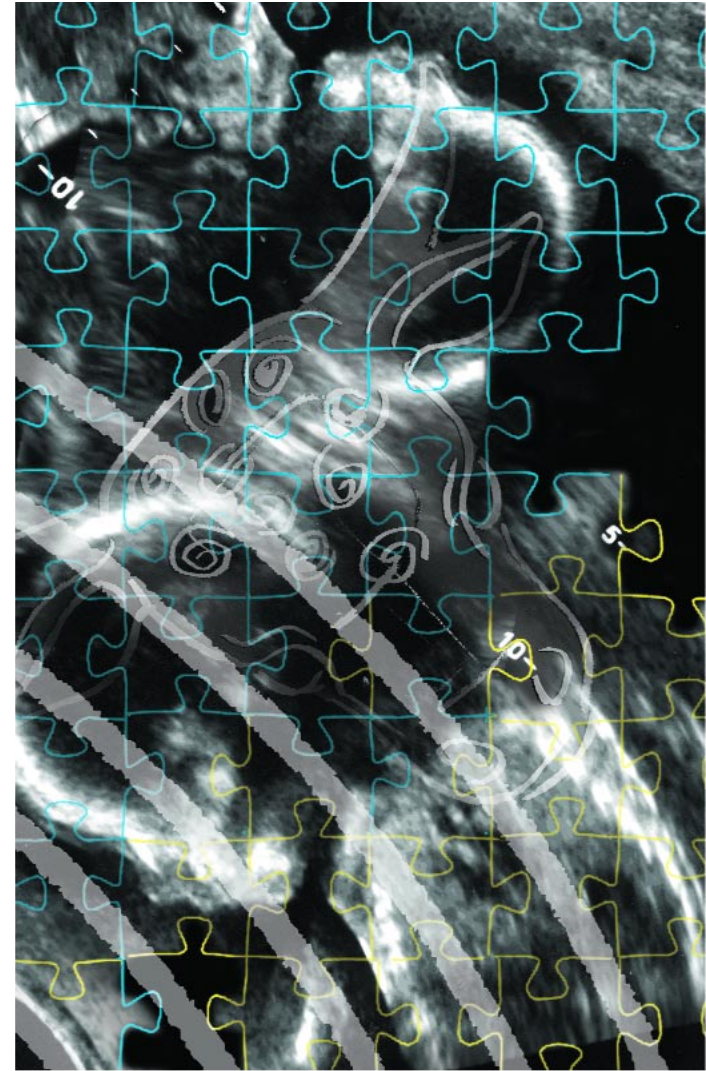
Anne Chesnut
 1.4 Row 1, number 4 from the
 composite 12 piece series
Labyrinth Study: La Sinistra, 1999–2001
 Image © the artist. Courtesy of the artist
 and Les Yeux du Monde Gallery



Anne Chesnut
Labyrinth Study: La Destra, 1999–2001
 12 piece digital print series. Sheet size, 16 x 11 inches;
 image size, 10.75 x 7 inches. Edition of 24
 Image © the artist. Courtesy of the artist
 and Les Yeux du Monde Gallery



Anne Chesnut
1.1 Row 1, number 1 from the
composite 12 piece series
Labyrinth Study: La Destra, 1999–2001
Image © the artist. Courtesy of the
artist



Anne Chesnut
1.4 Row 1, number 4 from the
composite 12 piece series
Labyrinth Study: La Destra, 1999–2001
Image © the artist. Courtesy of the
artist



- In *Abecedarium*, a letter study that exams some of the references associated with each character, *Yankee* (Y)ʼs imagery includes not only x-and y-axes, international signal flag, and letter formation and proportions but a y-chromosome and in *X-ray* (X) associations include tic-tac-toe as well as the x-ray.

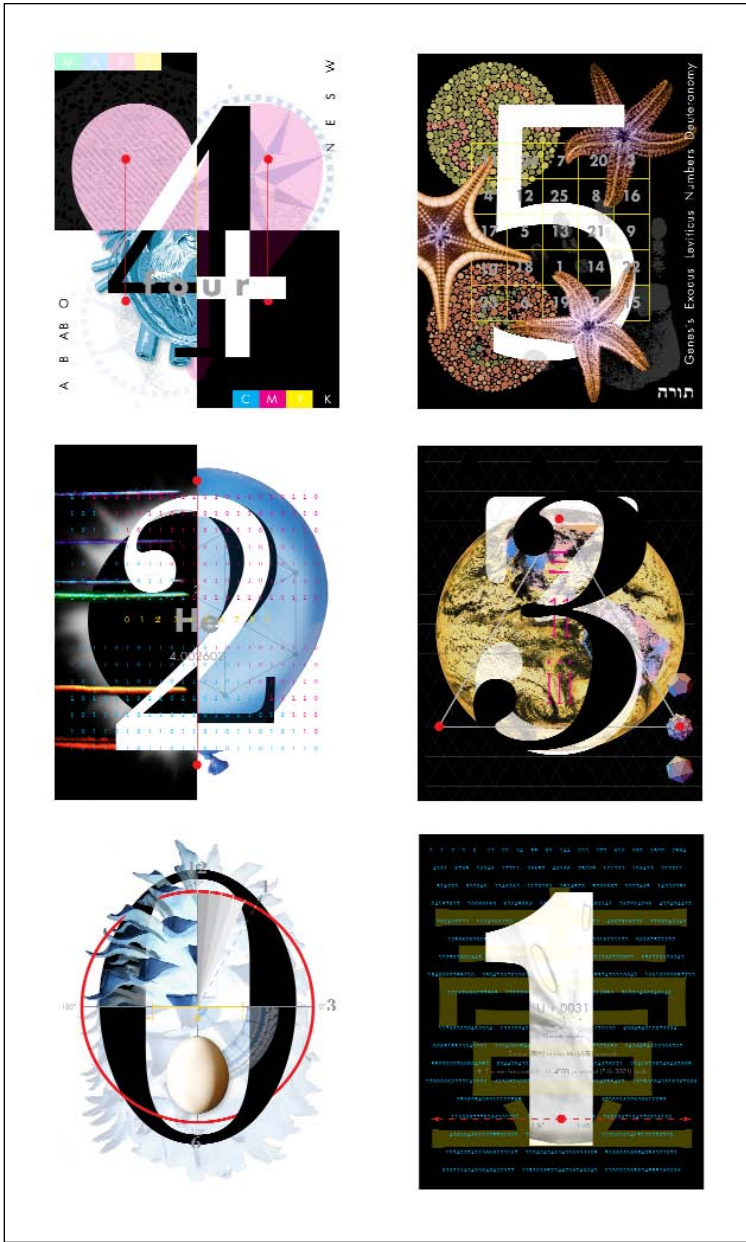
Anne Chesnut
Abecedarium, 2007
6 piece digital print series
Image size, 12 x 9 inches;
sheet size 20 x 13 inches
Edition of 24
Image © the artist. Courtesy of the
artist and Les Yeux du Monde Gallery



Anne Chesnut
 X, X-ray from the composite
 6 piece series *Abecedarium*, 2007
 Image © the artist. Courtesy of the artist
 and Les Yeux du Monde Gallery



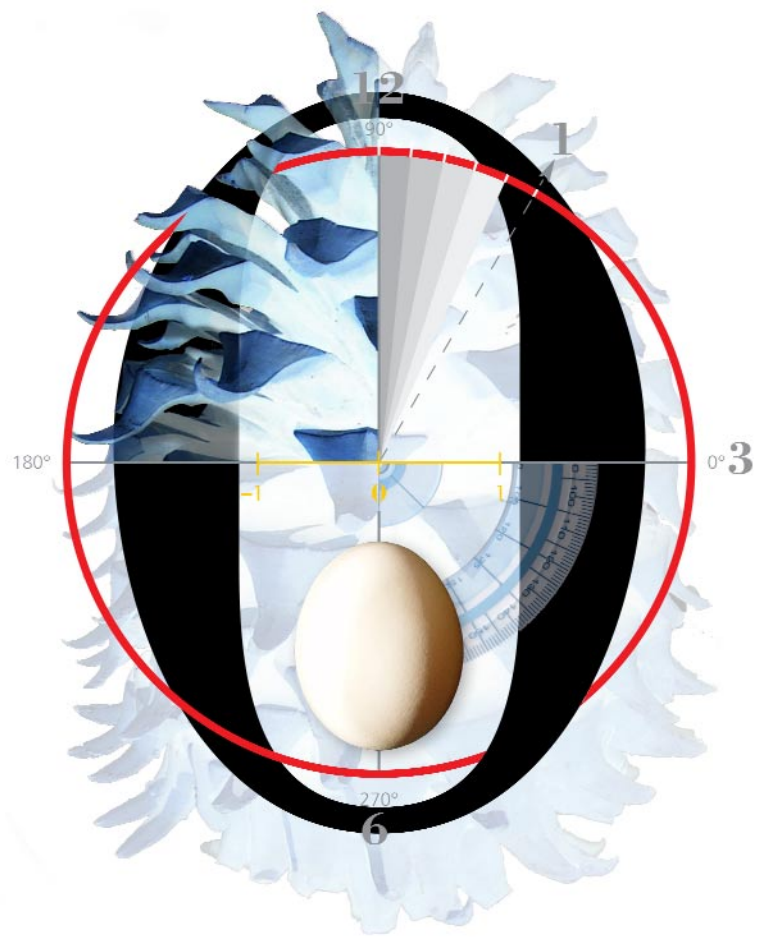
Anne Chesnut
 Y, Yankee from the composite
 6 piece series *Abecedarium*, 2007
 Image © the artist. Courtesy of the artist
 and Les Yeux du Monde Gallery



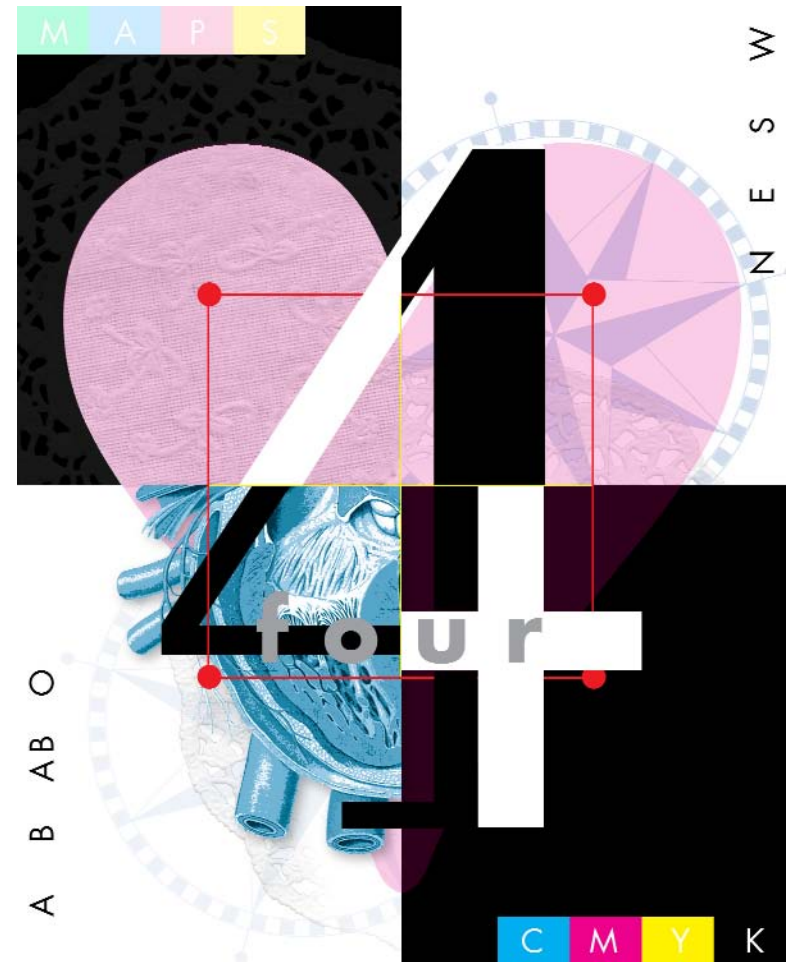
- Scientific references and their relationship to numbers can be found throughout the six part print series *Numerals/Numbers*: from *Two*, also the notation for helium, to *Four* which references not just the four directions and four printing ink colors but quadrants, four chambers of the heart, and the four blood groups. Other medical references are found in *Five* such as the color blindness charts.

Anne Chesnut
Numerals/Numbers, 2005
 6 piece digital print series
 Sheet size, 16 x 12 inches; image size, 10 x 8 inches
 Edition of 25
 Image © the artist. Courtesy of the artist and Les Yeux du Monde Gallery

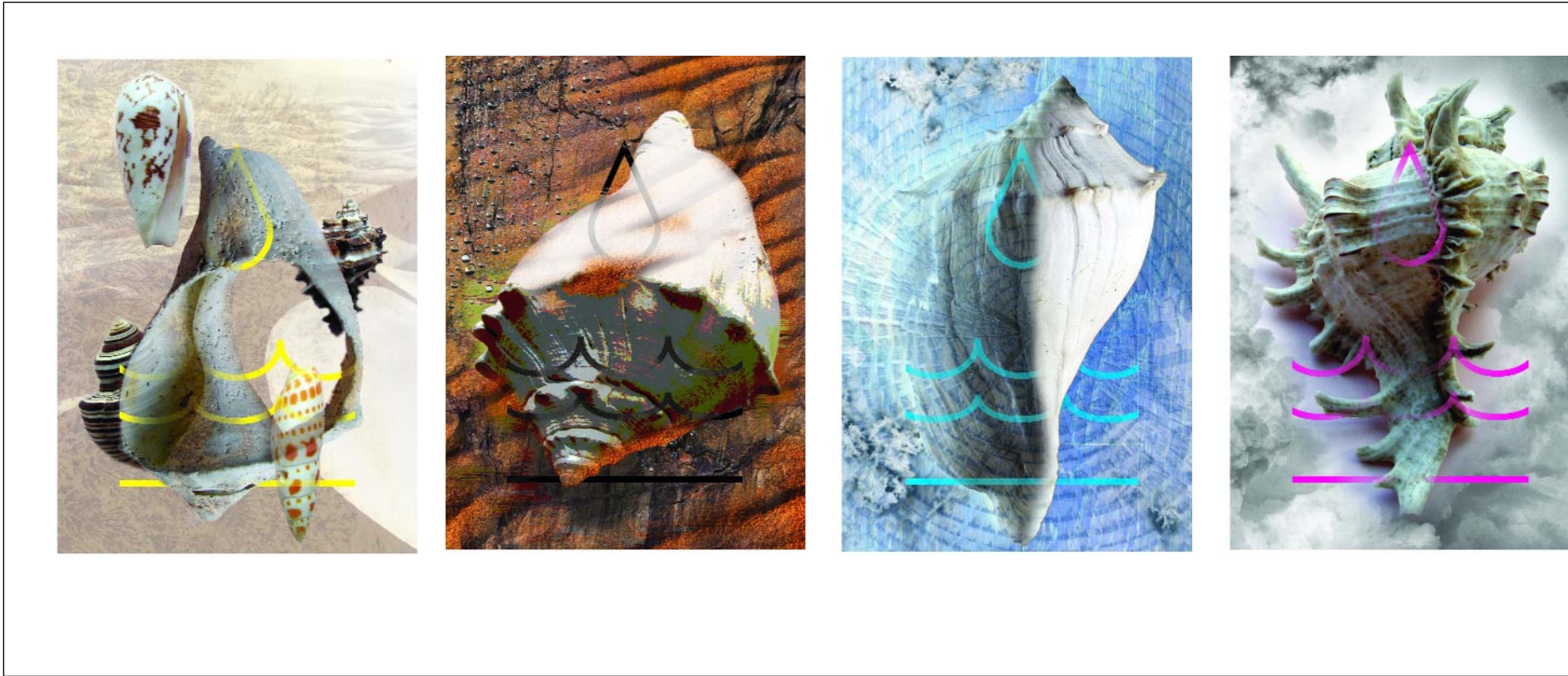
[Number: a quantity, an abstraction of a collection of things.
 Numeral: man made symbol that represents the number]



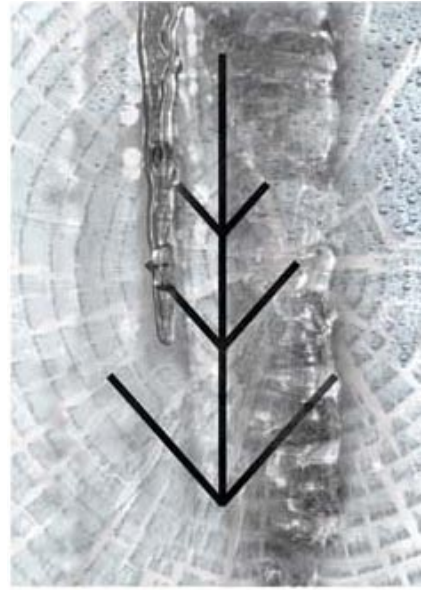
Anne Chesnut
 Zero from the composite 6 piece series
 Mumberals/Numbers, 2007
 Digital print
 Image © the artist. Courtesy of the artist
 and Les Yeux du Monde Gallery



Anne Chesnut
 Four from the composite 6 piece series
 Mumberals/Numbers, 2007
 Digital print
 Image © the artist. Courtesy of the artist
 and Les Yeux du Monde Gallery



Anne Chesnut
Leavings | Seasons, 2005
4 piece digital print series
Sheet size, 18 x 13 inches;
image size 10 x 8 inches
Edition of 25
Individual prints identified as:
Summer
Fall
Winter
Spring
Image © the artist. Courtesy of the
artist and Les Yeux du Monde Gallery



Anne Chesnut
Tree of Life | Seasons, 2005
4 piece digital print series
Sheet size, 18 x 13 inches;
image size 10 x 8 inches
Edition of 25
Spring
Summer
Fall
Winter
Image © the artist. Courtesy of the
artist and Les Yeux du Monde Gallery



Les Yeux du Monde
Art Gallery

The Terraces, 115 South First Street
Charlottesville VA 22902

434.973.5566 *tel*

LesYeuxduMonde.com *web*