

Gallery Artists

Esmé Thompson

PAINTINGS



Les Yeux du Monde Art Gallery
Charlottesville VA



Les Yeux du Monde
Art Gallery

The Terraces, 115 South First Street
Charlottesville VA 22902

434.973.5566 *tel*

LesYeuxduMonde.com *web*

Our Mission

Les Yeux du Monde specializes in exhibiting and selling contemporary art by regional, national and international artists with an eye to the historical importance of each artist shown. We seek to inspire individuals to explore new artistic perspectives, deepen their understanding of and appreciation for art and to support art in the state and the Mid Atlantic region.

The gallery

Les Yeux du Monde gallery is a leader in the region for contemporary art, sculpture and photography. Founded in 1995, Les Yeux du Monde represents over 40 contemporary artists including Dean Dass, John Borden Evans, Annie Harris Massie, Lincoln Perry, and Russ Warren, as well as some promising undiscovered talents.

Lyn Bolen Warren, the owner/director, received her Ph.D. in art history from the University of Virginia in 1994. She opened the original gallery from her home, and as it developed the gallery moved to its present location on the corner of Water and First Streets off the historic downtown mall. International in scope, Les Yeux du Monde has exhibited work by modern masters such as Jean-Michel Basquiat, Romare Bearden, Frank Stella and Andy Warhol. Les Yeux du Monde also collaborates with the University of Virginia Art Museum and Second Street Gallery on exhibits of caliber, such as the 2000 site specific exhibition *Hindsight/Fore-site: Art for the New Millennium* with the museum in 2000 and more recently, in 2006, the *Anne Slaughter Retrospective* at Second Street Gallery.

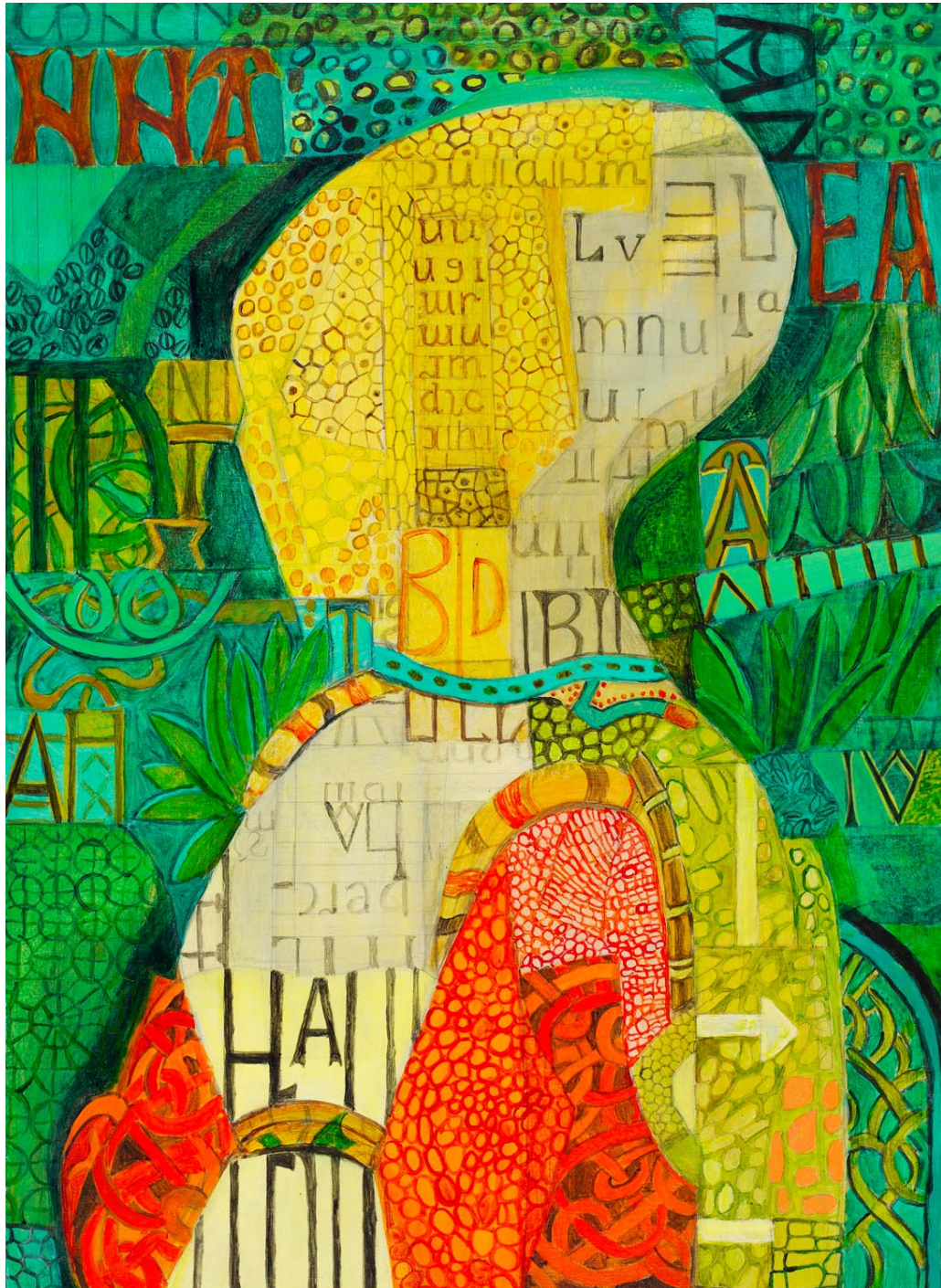
Les Yeux du Monde maintains an important inventory of work by regional and national artists. Over the past twelve years the gallery has helped many private and corporate clients assemble collections of high quality art suited to their particular needs and budgets. Les Yeux du Monde has a new exhibition each month which opens to the public, on each “First Friday” from 5:30–7:30.

Esmé Thompson

Esmé Thompson is a painter and Professor of Studio Art who has taught at Dartmouth College since 1979. Her paintings are brilliant celebrations of color and design that make use of a wide range of source materials and link patterns found in nature with aspects of man-made design. She reminds us that in art, as in nature, simple patterns often organize lively and complex structures. Her work includes paintings on canvas, paper, board and painted metal relief pieces.

Thompson is a member of the Bowery Gallery in New York City. She has been a resident of the Rockefeller Foundation and the Bogliasco Foundation in Italy, and returns to Italy often to pursue her interest in medieval painting and the decorative arts.

Thompson has curated a traveling group show, *Networks and Intersections* that appeared at the University of New Hampshire, New Newton Art Center, and will be at Swarthmore College (November 2007) and the Brattleboro Museum (December 2007)



Esmé Thompson
After Pisanello, 2006.
Acrylic on board, 11 x 10 inches



Esmé Thompson
Credo, 2005.
Acrylic on board, 24 x 24 inches



Esmé Thompson
Ritratto, 2006.
Acrylic on board, 22 x 15 inches



Esmé Thompson
Pensa, 2006.
Diptych, acrylic on board,
two 9 x 12 inches panels



Esmé Thompson
Tessere III, 2005.
Acrylic on canvas, 22 x 22 inches



Esmé Thompson
Ornamentum V, 2005.
Right side; acrylic on metal;
fifteen panels, 12 x 12 inches



Les Yeux du Monde
Art Gallery

The Terraces, 115 South First Street
Charlottesville VA 22902

434.973.5566 *tel*

LesYeuxduMonde.com *web*